

2018 - a problem season?

Sally Cunningham







Grass temperatures of 55C were recorded in Leicestershire during June and July.

- At Ryton, 34 consecutive days without rainfall during June & July
- The growing season over the past 4 months (May to August) has only had 47 days suitable for grass growth, out of a total of 123 days.
- Central England Temperature records for February and March were over 2°C higher than normal, while May and June were 2.9°C above average.(July scraped in at 0.7°C higher, and August was only 1.6°)
- The rainfall deficit for 2018 to date is 187 mm (the 10-yearly average rainfall is 575 mm)

(Statistics c/o Mountsorrel & Church Lawford weather stations as well as Ryton records.)

Good year for.....

Dragonflies



Some butterfly species



The early wet and cold weather caused lasting damage

Acanthus killed back by frost



Blasting of daffodil flowers



.... diseases of cold wet soils were rife early on in the season

Blackleg



Wisteria basal root rot



Many plants developed heat stress

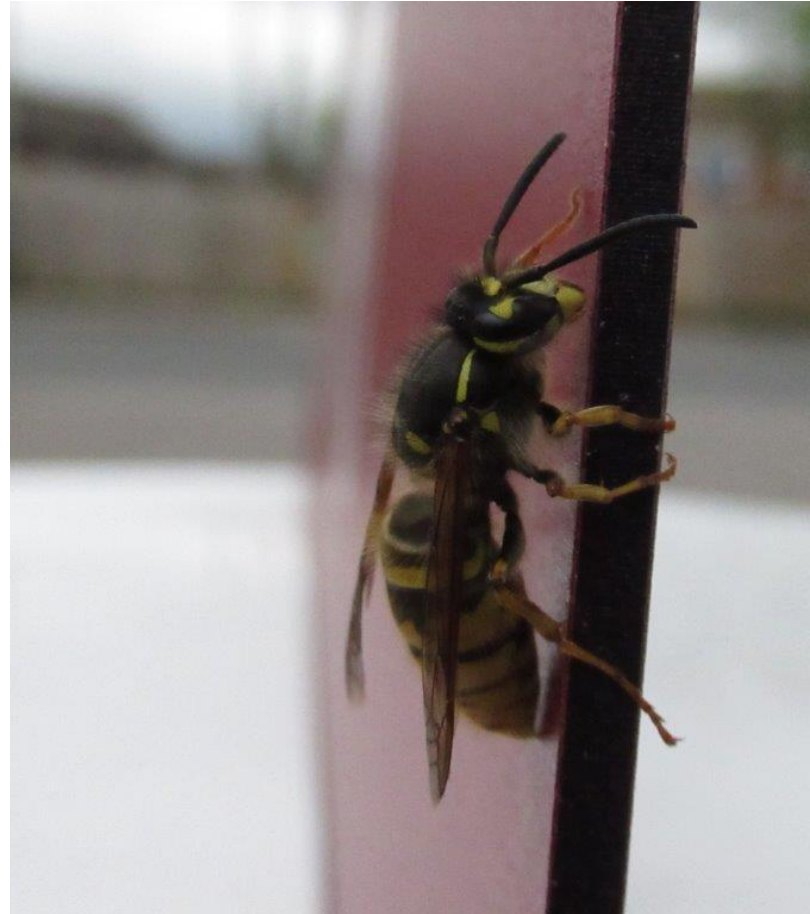


Other symptoms of heat damage





Ladybird numbers rocketed, and so did wasps



Unusual species relished the heat and flowered like never before....

Emmenopterys henreyi flowering as far
north as the Cotwolds for the first time
since 1906



The heavily scented flowers of
Polioythraxis sinensis



Heavy crops of fruit abounded



Warm region crops prospered, from chick peas to sweet potatoes and more

Dudi (*Lageneria siceria*)



Chick peas and papri (*Dolichos lablab*)



Plants adapted to warm weather

Callaloo – *Amaranthus*. Popular with Afro-Caribbeans, Asians, Indo-Chinese



Papri - (*Dolichos lablab*) –Indian and Pakistani favourite, also Chinese



Other warm region crops include

Shark's fin melon (*Cucurbita ficifolia*)



Yard long beans (*Vigna sesquipedalis*)



- Karella, *Momordica charantica*
- Chinese yam, *Dioscora batatas*
- Fenugreek or methi – *Trigonella fenum-graceum* and small-seeded methi, *T. harmala*
- Winter melon, *Benecasia hispida*
- Keera cucumber, *Cucmmis sativa* and snake cucumber, *C. sativa var melo*
- Chayote, *Sechium edule*

Cold adapted plants

- Pod radish or mongra, *Raphanus sativus*
- Mustard greens, *Brassica juncea*
- African kale, *Brassica oleracea var aceophala* – despite its Ethiopian origin, hardy to -10C!
- Cresses in variety from all over the world – mostly *Lepidum sativum*

For more information and free-to-download
factsheets, visit the website -

Sowingnewseeds.org

And finally, a Garden Organic member kindly sent us this picture of her peach tree fruiting in Newcastle-on-Tyne...

