

Tropical Weather and the Humanitarian Response

Dr. Beth Simons



INTRODUCTION

- ShelterBox
- Tropical weather monitoring
- Story of a response:
 - Decision to respond
 - Preparedness
 - Needs assessments
 - Aid selection
 - Training & Build Back Safer
- The future of humanitarian intervention?
 - Climate Change
 - Risk
 - Resilience



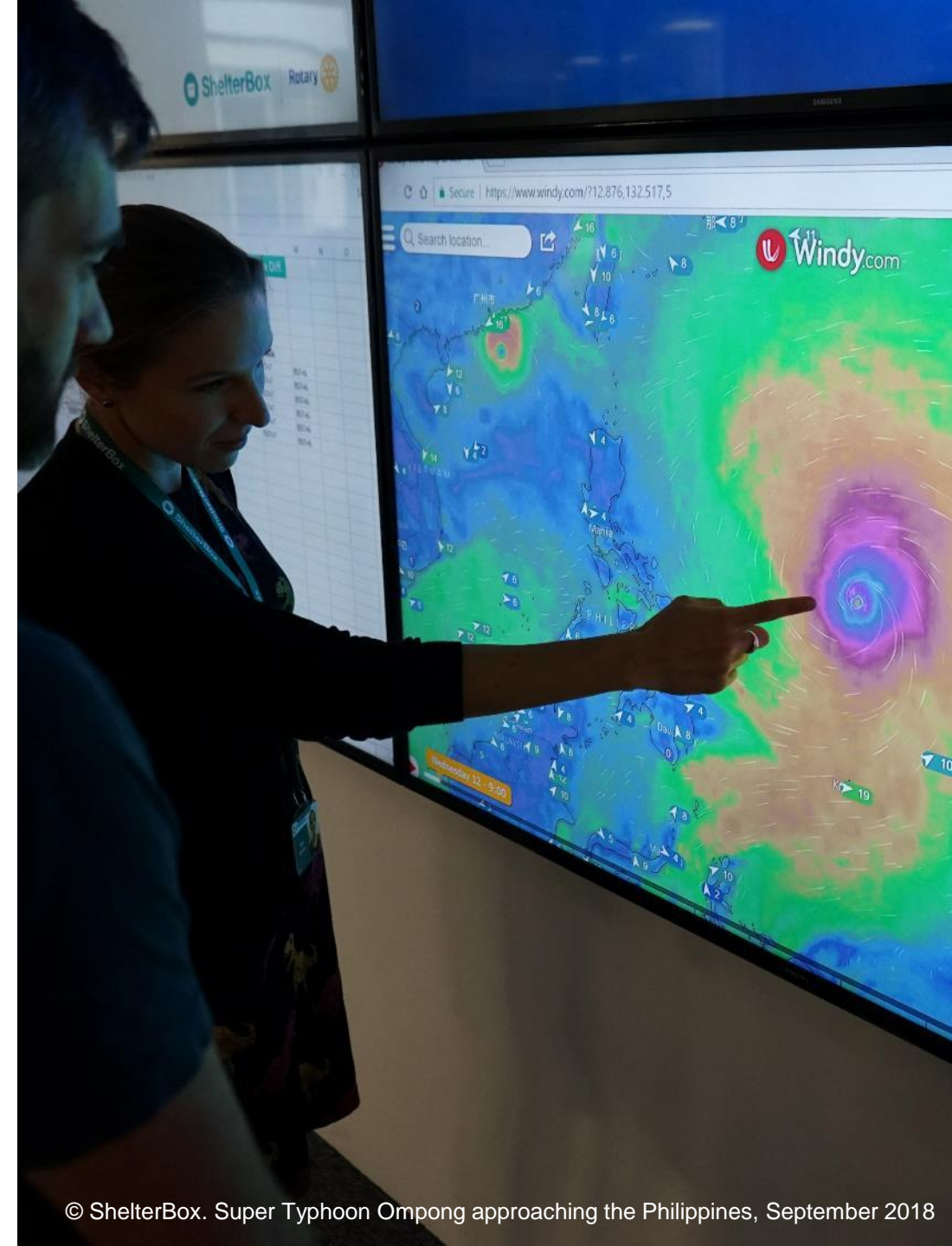
SHELTERBOX

- International disaster relief charity. Based in the UK with an office in the Philippines.
- Founded 2000 as a Rotary Millennium Project.
- Focus on emergency shelter and non-food (household) items.
- Aid items tailored to each response.
- In 2018:
 - *Supported over 2 10,000 people*
 - *Operated in 17 countries*
 - *Responded to 4 tropical weather systems*



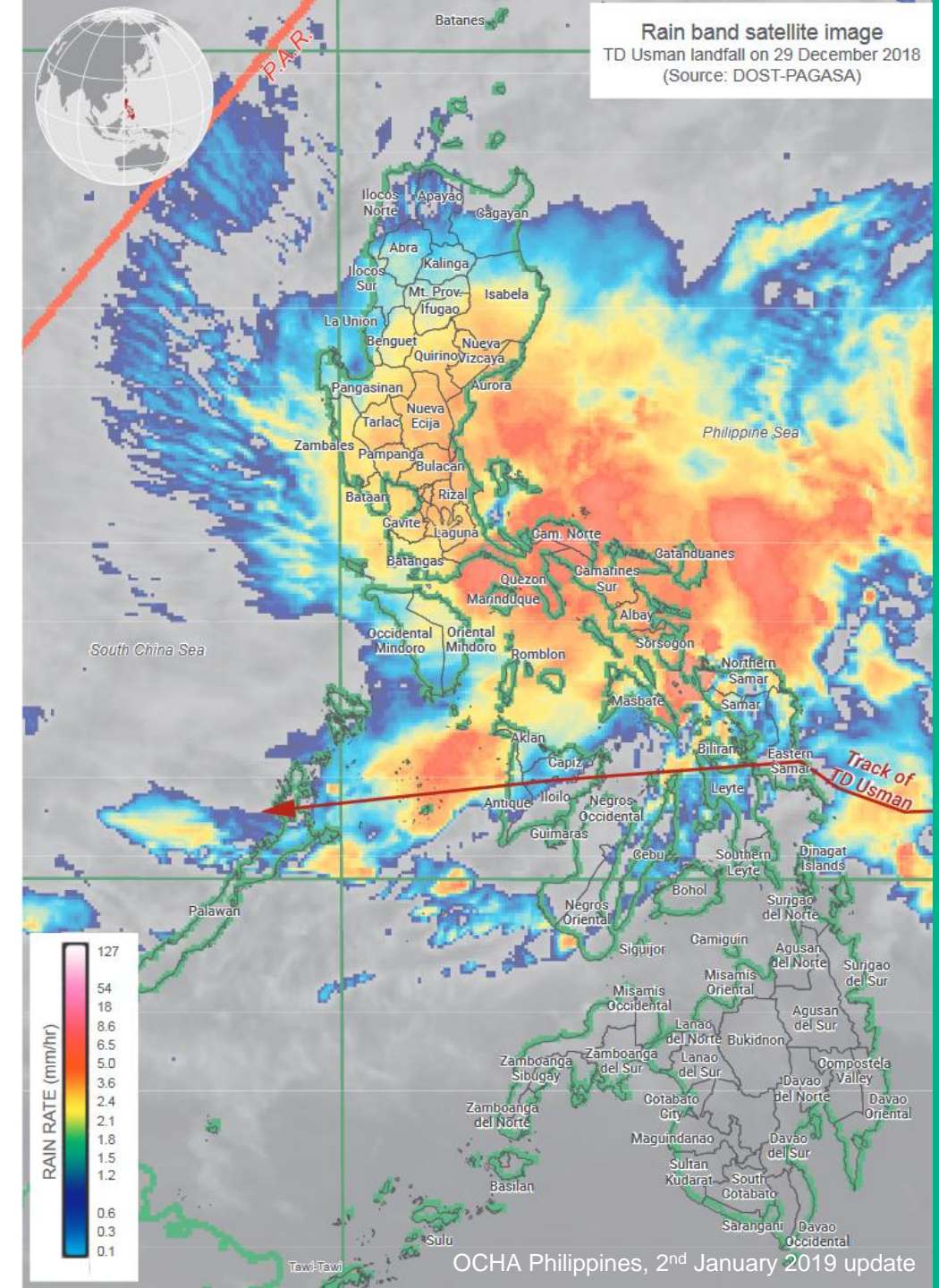
MONITORING

- Global Disaster Alert and Coordination System (GDACS)
- NOAA Climate Prediction Centre
- NOAA Famine Early Warning System (FEWS)
- Joint Typhoon Warning Centre (JTWC)
- Met Office
- Windy.com
- EU Joint Research Centre (JRC)
- Tropical Storm Research (TSR)
- World Meteorological Organisation (WMO)
- World Food Programme ADAM Alerts
- Local agencies: PAGASA (Philippines), NCHMF (Vietnam), CONRED (Guatemala)



TROPICAL WEATHER & MONSOONS

- Monitoring of monsoon seasons.
- Tropical weather often enhances monsoon rains leading to increased humanitarian impact of tropical depressions and tropical storms.
- Example – Tropical Depression Usman, Philippines (December 2018) met with the Northeast Monsoon (Amihan).



STORY OF A RESPONSE

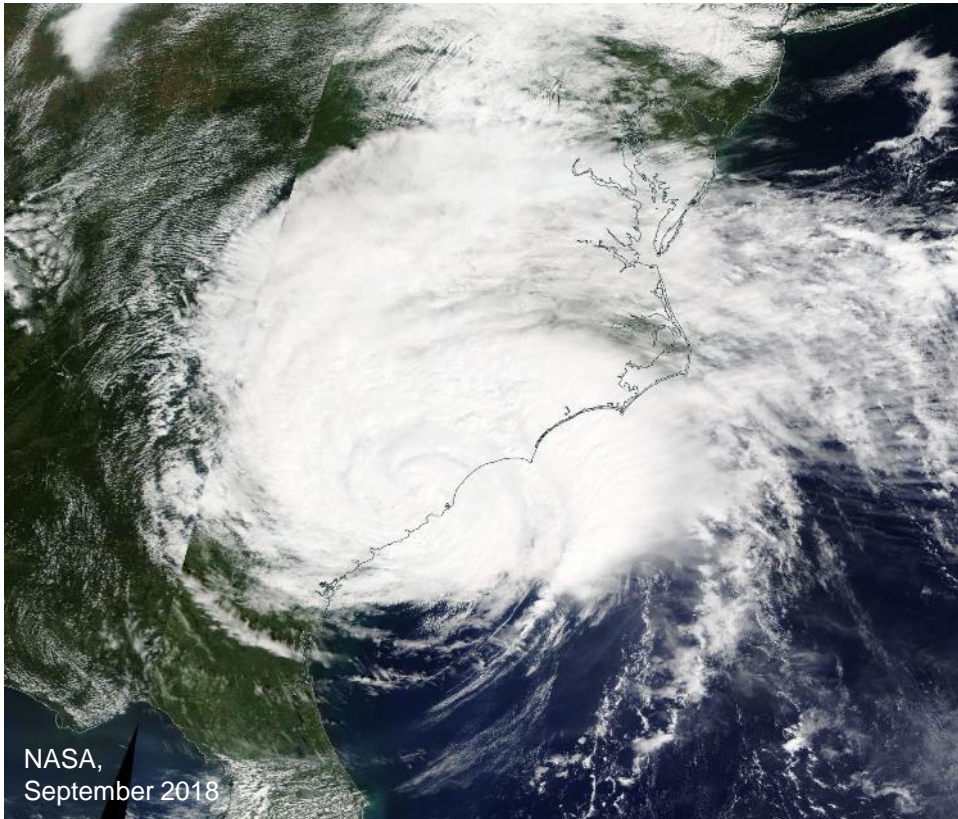




A TALE OF TWO STORMS

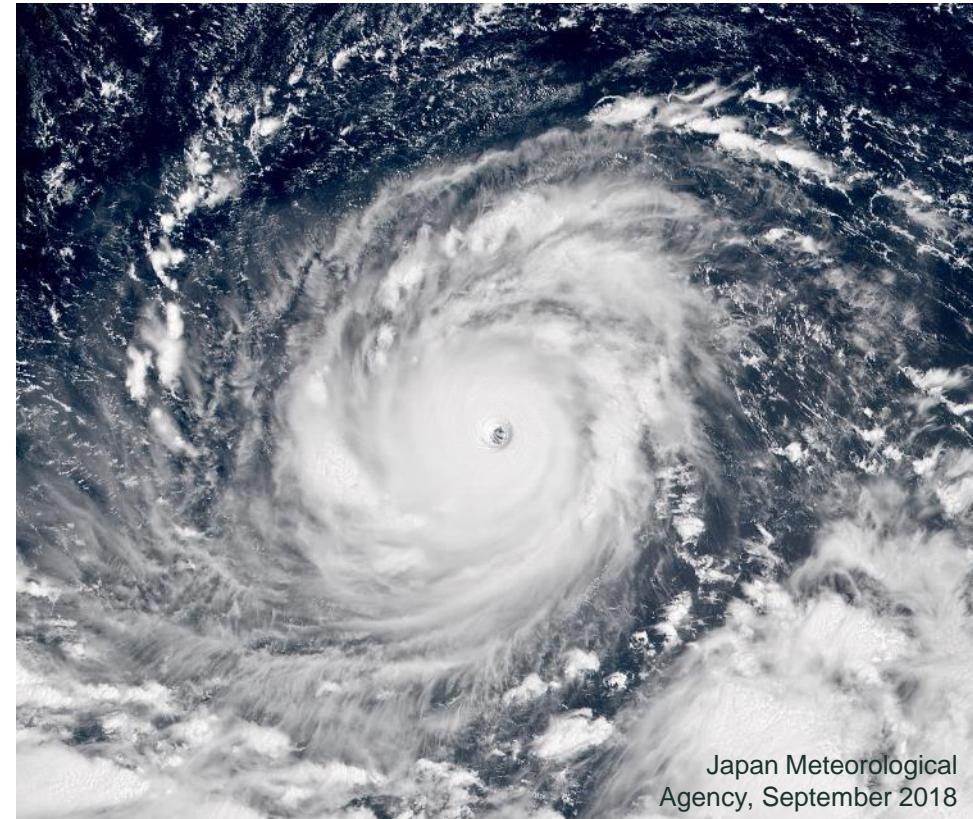
Hurricane Florence, USA

- Landfall September 14th 2018
- Category 1 Hurricane



Typhoon Ompong (Mangkhut), Philippines

- Landfall September 15th 2018
- Category 5 equivalent Super Typhoon



DECISION TO RESPOND



Government
Response



Number of families
needing help



Type of aid



Length of time
support is needed



Speed of
self-recovery



Local
capacity



ShelterBox
Resources



Safety



Speed and
Efficiency



Development
Index Rating



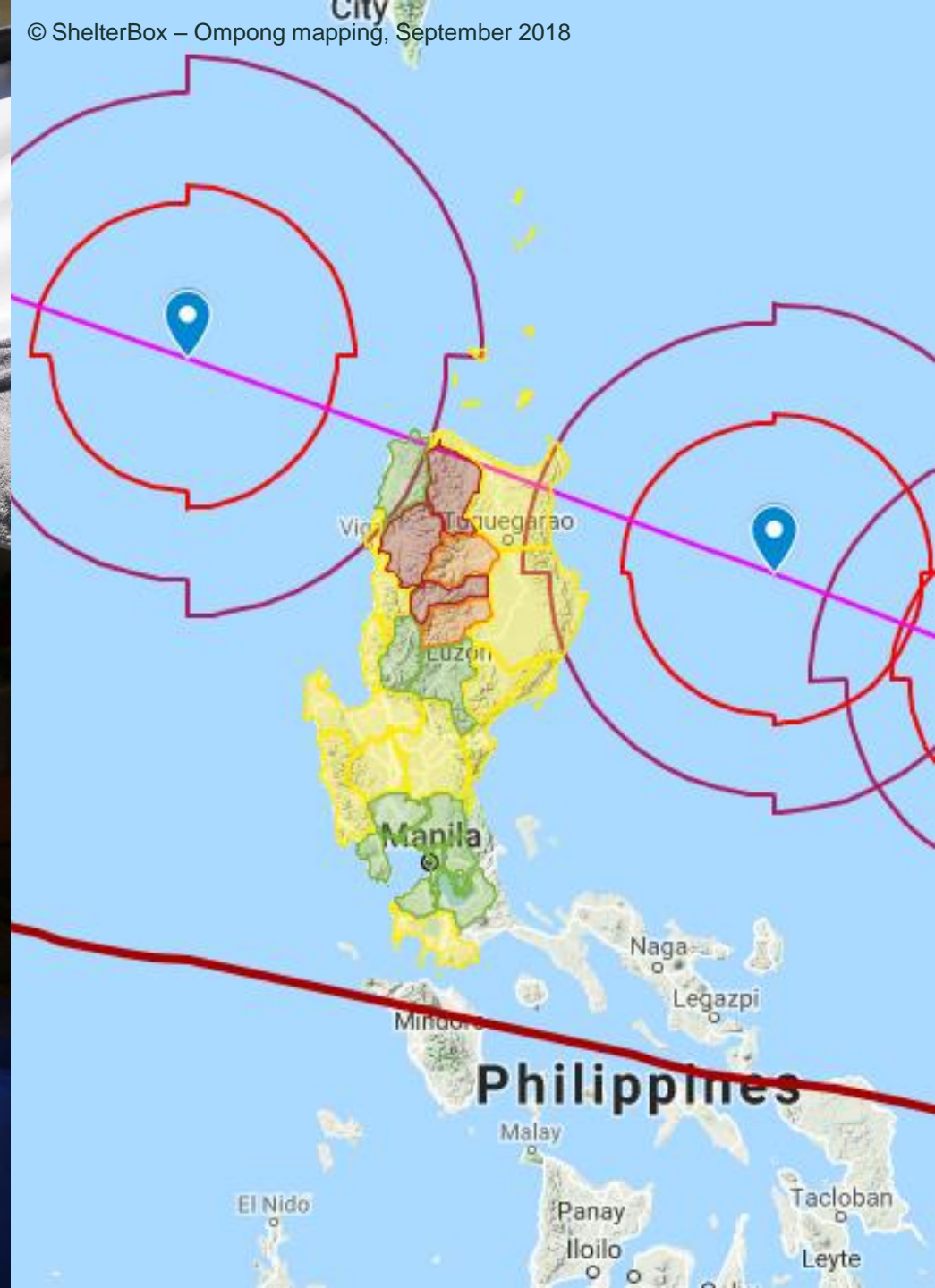
PREPAREDNESS

- Maps
- Demographics
- Previous responses?
- Local contacts
- Humanitarian coordination
- Prepositioned aid
- Safety & security
- Local logistics



© ShelterBox. Tropical Storm Kai-Tak: Philippines, January 2018

© ShelterBox – Ompong mapping, September 2018



NEEDS ASSESSMENTS



AID





TRAINING

- Design of pictorial instructions for items.
- Delivery of training to community representatives.



© ShelterBox. Typhoon Ompong, Philippines October 2018



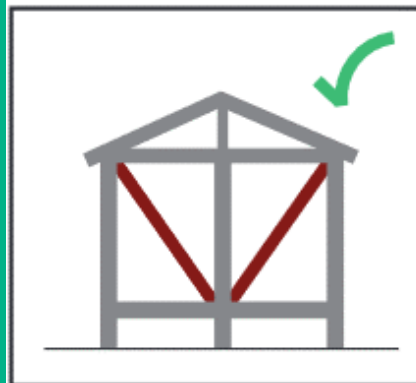
© ShelterBox. Typhoon Ompong, Philippines October 2018



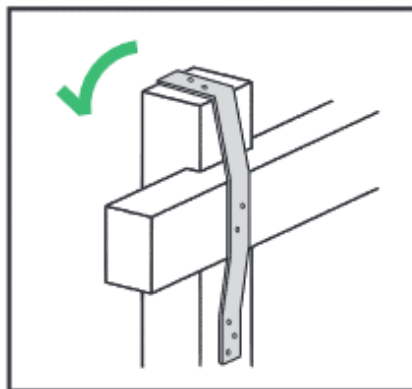
BUILD BACK SAFER

- Key messages for good construction techniques tailored to the context.

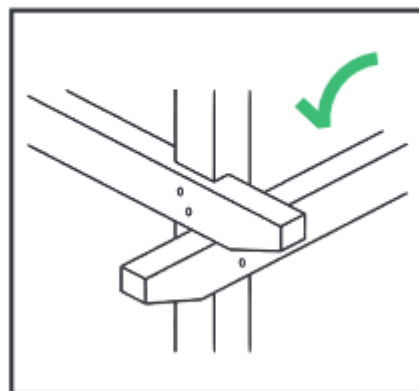
BRACE AGAINST THE STORM



TIE-DOWN FROM BOTTOM UP



USE STRONG JOINTS



Shelter Cluster Philippines
ShelterCluster.org
Coordinating Humanitarian Shelter





MONITORING & EVALUATION



“I love the tent so much as it has allowed me to return home, and to my work on my vegetable patch...It helped me to be able to build my new home whilst I stayed in the tent.”

Blandina, Dominica





THE FUTURE?



CLIMATE CHANGE

“Climate-related disasters including floods, storms and droughts account for more than 90% of the world’s disasters and affect the greatest number of people. ”

OCHA – Global Humanitarian Overview 2019

Climate change is making hurricanes way more intense
September 17, 2018 | 11:24am | Updated
By Associated Press

Is climate change making hurricanes worse?
Hurricane season is here, and long-term trends paint a worrying picture



“ Displaced populations in particular often end up living in hazardous urban areas and their unfamiliarity with climate risks in these places makes them particularly vulnerable. ”

ODI – Climate change, migration and the 2030 agenda for Sustainable Development, 2016



RISK



RESILIENCE

“Poverty, inequality, population growth, urbanization and climate change can erode people’s resilience and make them more susceptible to shocks.”

OCHA – Global
Humanitarian Overview
2019

Thanks!

bethsimons@shelterbox.org

ShelterBox

Falcon House, Charles Street,
Cornwall, TR1 2PH.

T +44 (0) 1872 302600

E info@shelterbox.org

W www.shelterbox.org

Charity No. 1096479. Company No. 4612652.
President: HRH The Duchess of Cornwall
ShelterBox is a Charity independent of Rotary
International and the Rotary Foundation.

